

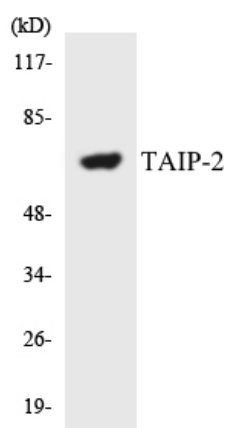


CSRNP3 Polyclonal Antibody

Catalog No	YP-Ab-00362
Isotype	IgG
Reactivity	Human;Mouse;Monkey
Applications	WB;ELISA
Gene Name	CSRNP3
Protein Name	Cysteine/serine-rich nuclear protein 3
Immunogen	The antiserum was produced against synthesized peptide derived from human TAIP-2. AA range:171-220
Specificity	CSRNP3 Polyclonal Antibody detects endogenous levels of CSRNP3 protein.
Formulation	Liquid in PBS containing 50% glycerol, 0.5% BSA and 0.02% sodium azide.
Source	Polyclonal, Rabbit,IgG
Purification	The antibody was affinity-purified from rabbit antiserum by affinity-chromatography using epitope-specific immunogen.
Dilution	Western Blot: 1/500 - 1/2000. ELISA: 1/20000. Not yet tested in other applications.
Concentration	1 mg/ml
Purity	≥90%
Storage Stability	-20°C/1 year
Synonyms	CSRNP3; FAM130A2; TAIP2; Cysteine/serine-rich nuclear protein 3; CSRNP-3; Protein FAM130A2; TGF-beta-induced apoptosis protein 2; TAIP-2
Observed Band	64kD
Cell Pathway	Nucleus .
Tissue Specificity	Embryo,Thymus,
Function	function: Binds to the consensus sequence 5'-AGAGTG-3' and has transcriptional activator activity. Plays a role in apoptosis.,sequence caution: Unusual initiator. The initiator methionine is coded by a non-canonical CTG leucine codon.,similarity: Belongs to the AXUD1 family.,
Background	function: Binds to the consensus sequence 5'-AGAGTG-3' and has transcriptional activator activity. Plays a role in apoptosis.,sequence caution: Unusual initiator. The initiator methionine is coded by a non-canonical CTG leucine codon.,similarity: Belongs to the AXUD1 family.,
matters needing attention	Avoid repeated freezing and thawing!

Usage suggestions

This product can be used in immunological reaction related experiments. For more information, please consult technical personnel.

Products Images

Western blot analysis of the lysates from HepG2 cells using TAIP-2 antibody.